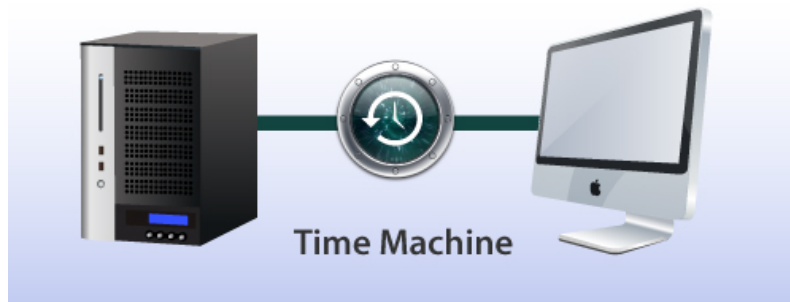




How to Connect Thecus NAS with Mac Time Machine

With Mac Time Machine support, users are able to automatically backup their entire Mac, including photos, movies, music, documents and applications, and save them on Thecus NAS servers. When ever the need arises, users can simply go back in time and recover their files quickly and effortlessly.



Time Machine is a smart backup application that not only enables users to restore their Macs to what it looked like in the past, but it also allows users to continue working with their Macs while all backup tasks take place in the background. One of the main advantages of utilizing a Thecus NAS as backup storage compared to other external HDDs or storage units is that the user's backup files will be safeguarded with Thecus' advanced RAID technology. Furthermore, connecting Mac Time Machine with a Thecus NAS server is the simplest thing ever; within a few clicks of a mouse, users will be ready to go.

Applicable Models: N0204 , N2200 , N4100PRO , N4200 , N5500 , N7700 Series , N8800 Series and 1U4600R/1U4600S

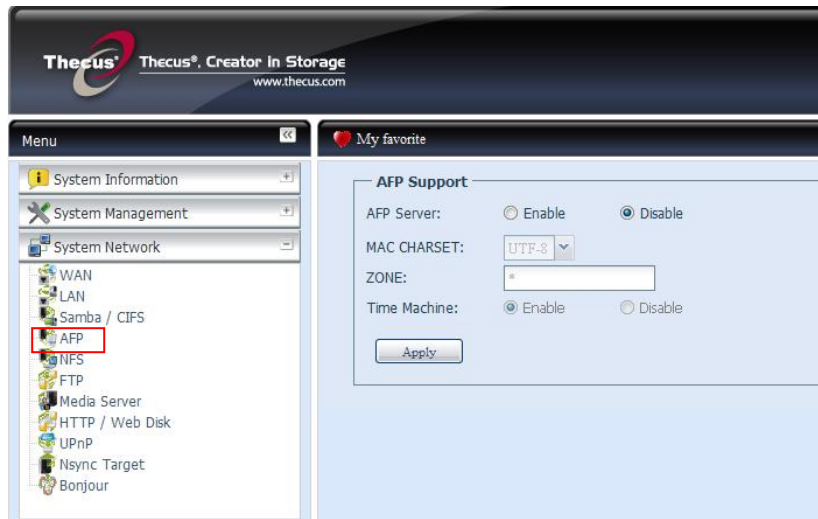
Please read the notes below carefully before starting:

Notes

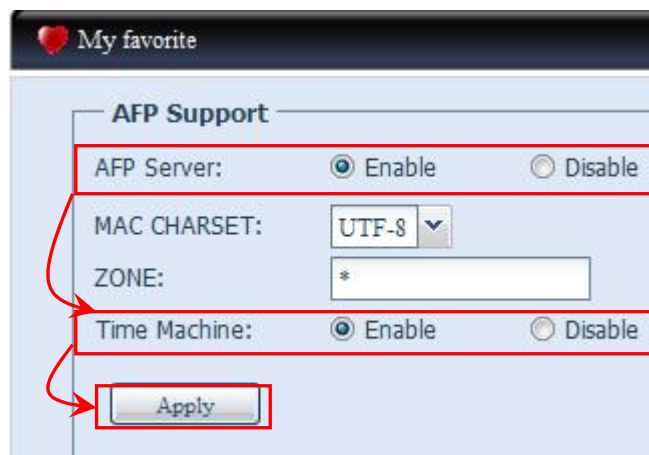
1. Mac Time Machine support is available on firmware v3.02.01 and above. For N0204 and N2200, it is available on firmware v3.00.11 and above.
2. Mac OS X version 10.6.4 with Thecus N7700 NAS server v3.03.00.4 is used in this HowTo Guide.

Part .1 –Thecus NAS Setup

1. In the web user interface, click on **AFP** under **System Network** to open the **AFP support page**.



2. On the **AFP Support page**, enable both **AFP Server** and **Time Machine**, then click on the **Apply** button on proceed.



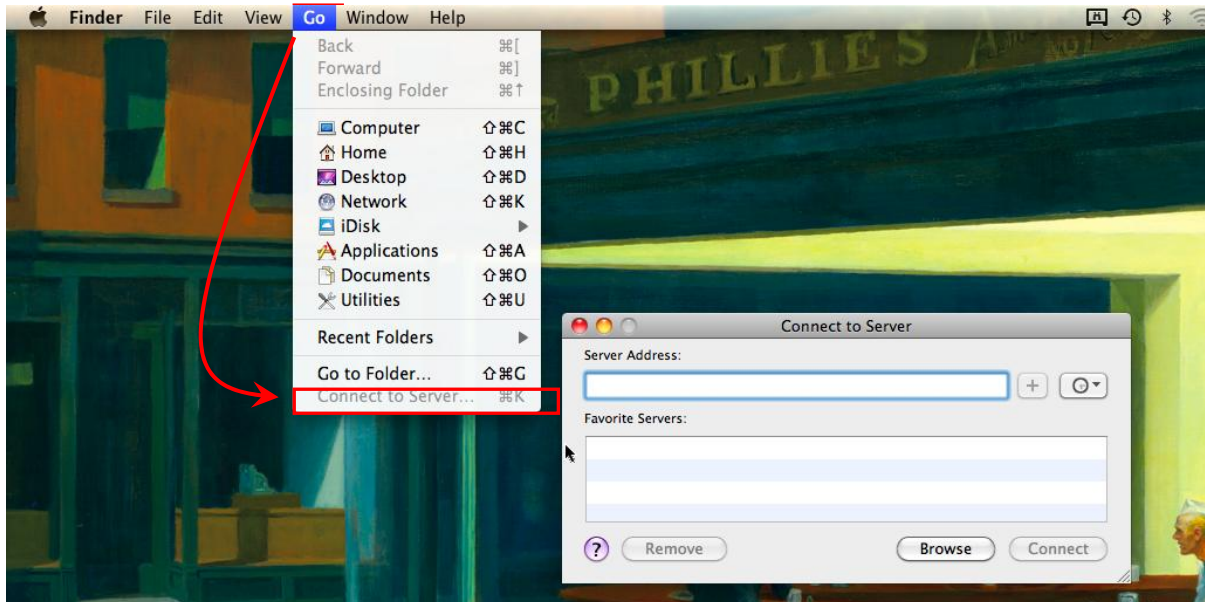
* On the Thecus N7700, a folder named **Time Machine** has been created and set to be public, this folder will be mounted later on the Mac to store backup files.

The screenshot shows a "Folder" management interface with a table of folders. The table has columns for "Folder name", "RAID ID", "File System", "Public", and "Description". The "Time Machine" folder is highlighted with a red box. The table data is as follows:

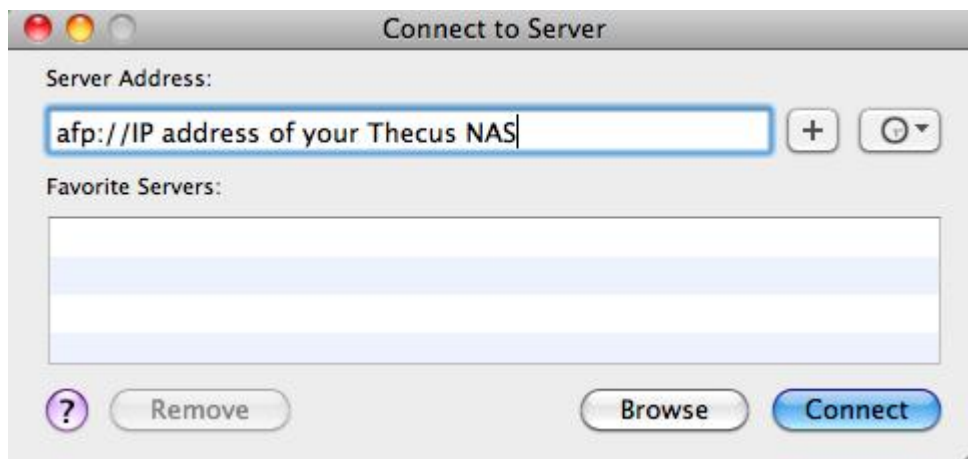
Folder name >>	RAID ID	File System	Public	Description
nsync	RAID0	ext3	no	nsync
usbhdd	RAID0	ext3	no	usbhdd
usbcopy	RAID0	ext3	no	usbcopy
naswebsite	RAID0	ext3	yes	naswebsite
Time Machine	RAID0	ext3	yes	Backup

Part .2 – Connecting Thecus NAS with Mac Time Machine

1. Next, on desktop of your the Mac, click on **Go**, then click on **Connect to Server** to open the **Connect to Server** widow.



2. On the **Connect to Server** window, in the **Server Address** field, please enter: ***afp://** followed by your **Thecus NAS IP address**. Then click **Connect** to proceed.



Notes

1. AFP stands for Apple Filing Protocol

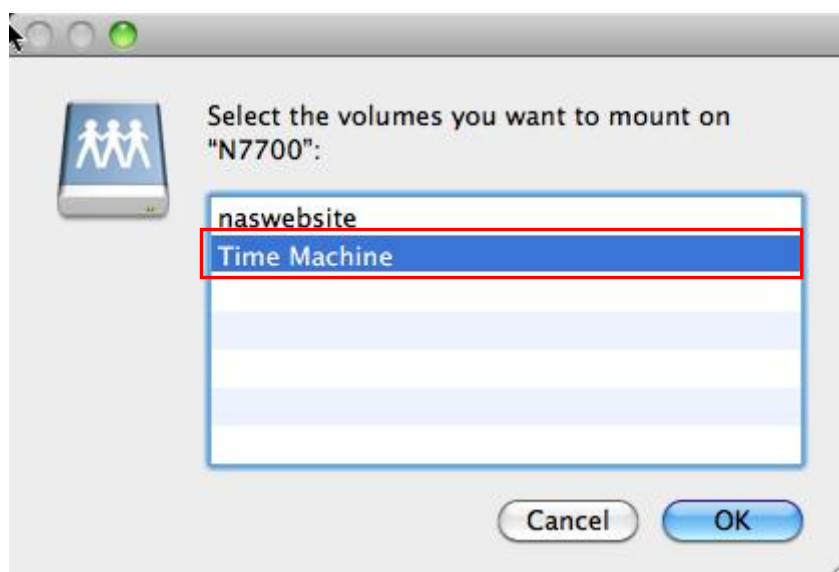
3. The screen below will appear showing you that the **Thecus N7700** has been located. Select **Registered User** and enter the name and password of a local user. Next, click **Connect** to proceed.



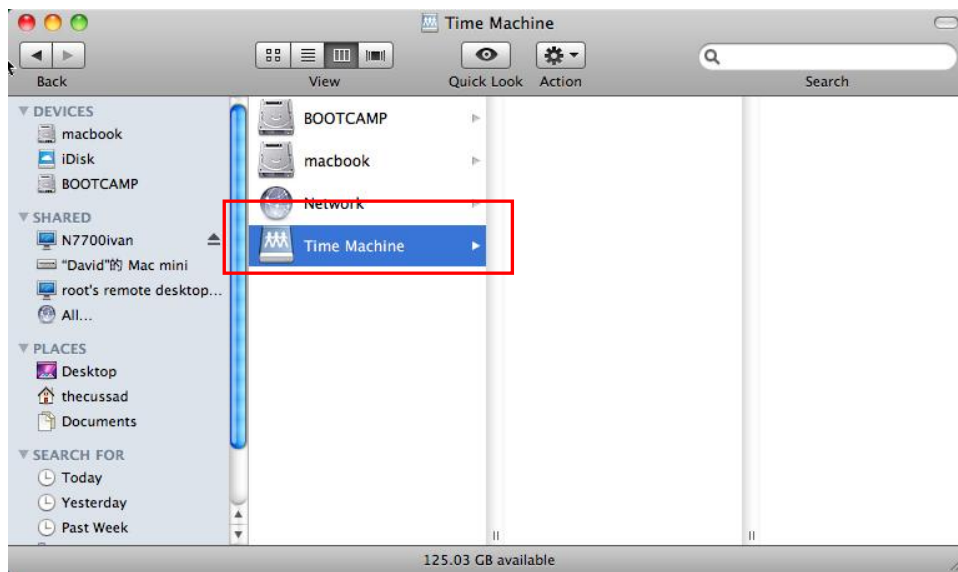
Notes

You may not be able to login as an administrator. You will have to login with the name and password of a local user on Thecus NAS. Please refer to user's manual on how to create local users on Thecus NAS. <http://www.thecus.com/download.php?type=m>

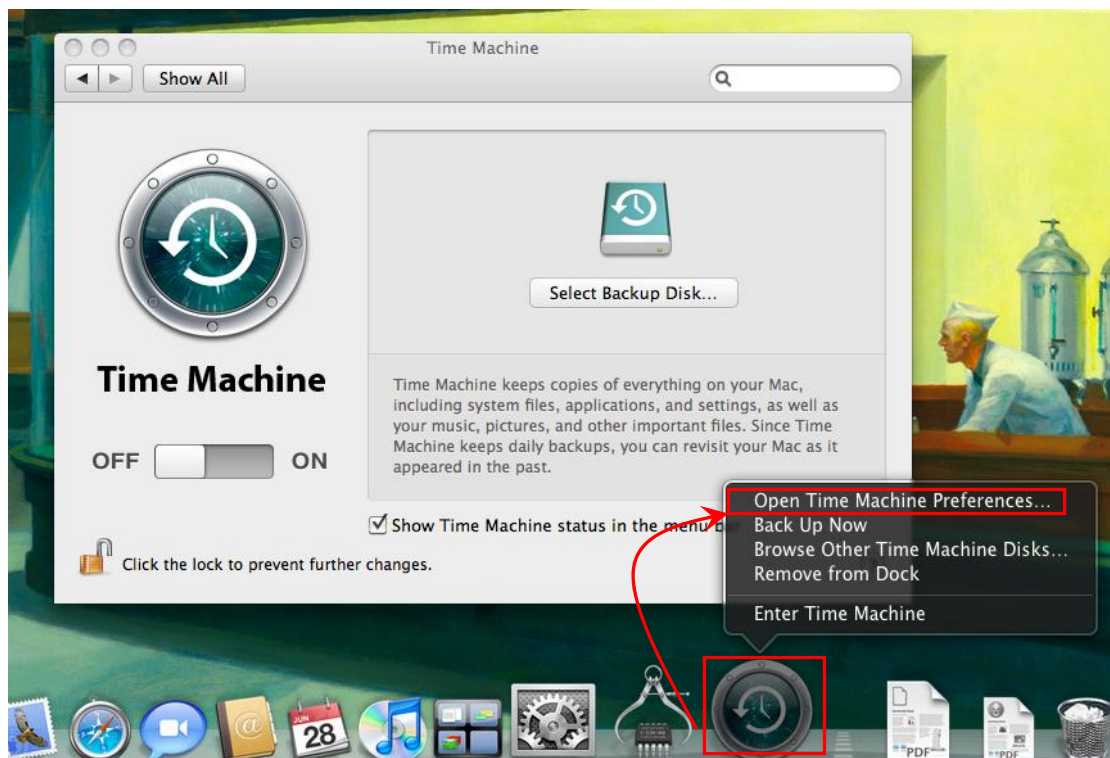
4. When connected successfully, a new window will appear showing you the available folders in which you can select to store your backup files. In this guide, we will select the **Time Machine** folder created previously (refer to part.1, step 2). Next, click on the **OK** button to proceed.



5. The window below will appear showing that the **Time Machine** folder has been mounted successfully as a shared folder.



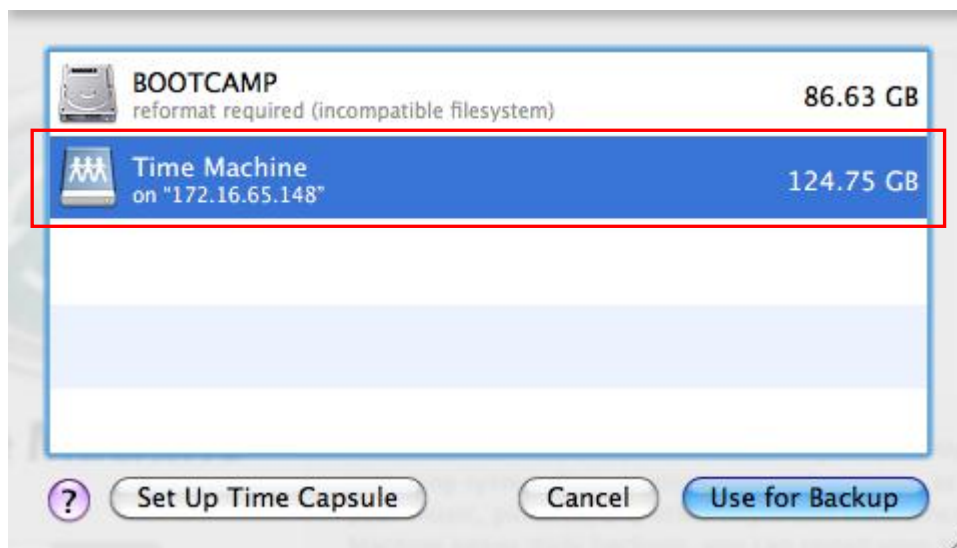
6. Now, return to the Mac desktop, right click on the **Time Machine** icon in the dock and click **Open Time Machine Preferences** to open Time Machine.



7. Next, click the **Select Backup Disk** button.



8. A new window will appear showing the available backup folder and storage space in which you can select and backup your files. Here, we will select the **Time Machine** folder previously mounted. Next, click **“Use for Backup”** to proceed.



9. Alright! You are all set and ready to go. Just remember to switch on the Time Machine to start backing up your Mac.



--End--

For any questions regarding this How-to Guide, please email us:

webmaster@thecus.com

For more How-to Guides, please go to:

http://www.thecus.com/nas_classroom.php

Copyright © 2010 Thecus® Technology Corporation. All rights reserved.