



How to Connect an iSCSI Target in Windows

Thecus SMB and Enterprise NAS servers (4-bay and above) currently offer support for both iSCSI initiators and targets. Users can create an iSCSI target volume on the Thecus NAS, and this target volume can then be added to desktop or laptop computers using an iSCSI initiator offered by various operating systems including Windows, Linux and Mac. Once connected, the volume will be shown on the computer as a local physical hard drive, which can be used to install applications or as extra storage space. It is also perfect for use as a backup destination with the protection of RAID from the Thecus NAS.

In this guide, we will show you step-by-step how to connect iSCSI targets using the Microsoft iSCSI initiator in Windows.

Applicable Models: N4100PRO · N4200 · N0503 · N5200PRO · N5500 · N7700 Series · N8800 Series · 1U4500R/1U4500S · 1U4600R/1U4600S

Before you begin, please carefully read the notes below:

NOTE

1. Please make sure you have successfully created an iSCSI target on Thecus NAS.
2. In this How to Guide, we will connect an iSCSI target in Windows using the iSCSI initiator in Windows 7.

Please also see:

- [How to Stack Thecus NAS Devices](#)
- [How to Create iSCSI Target on Thecus NAS](#)
- [How to Create iSCSI Thin-Provision Target on Thecus NAS](#)

About Microsoft iSCSI Software

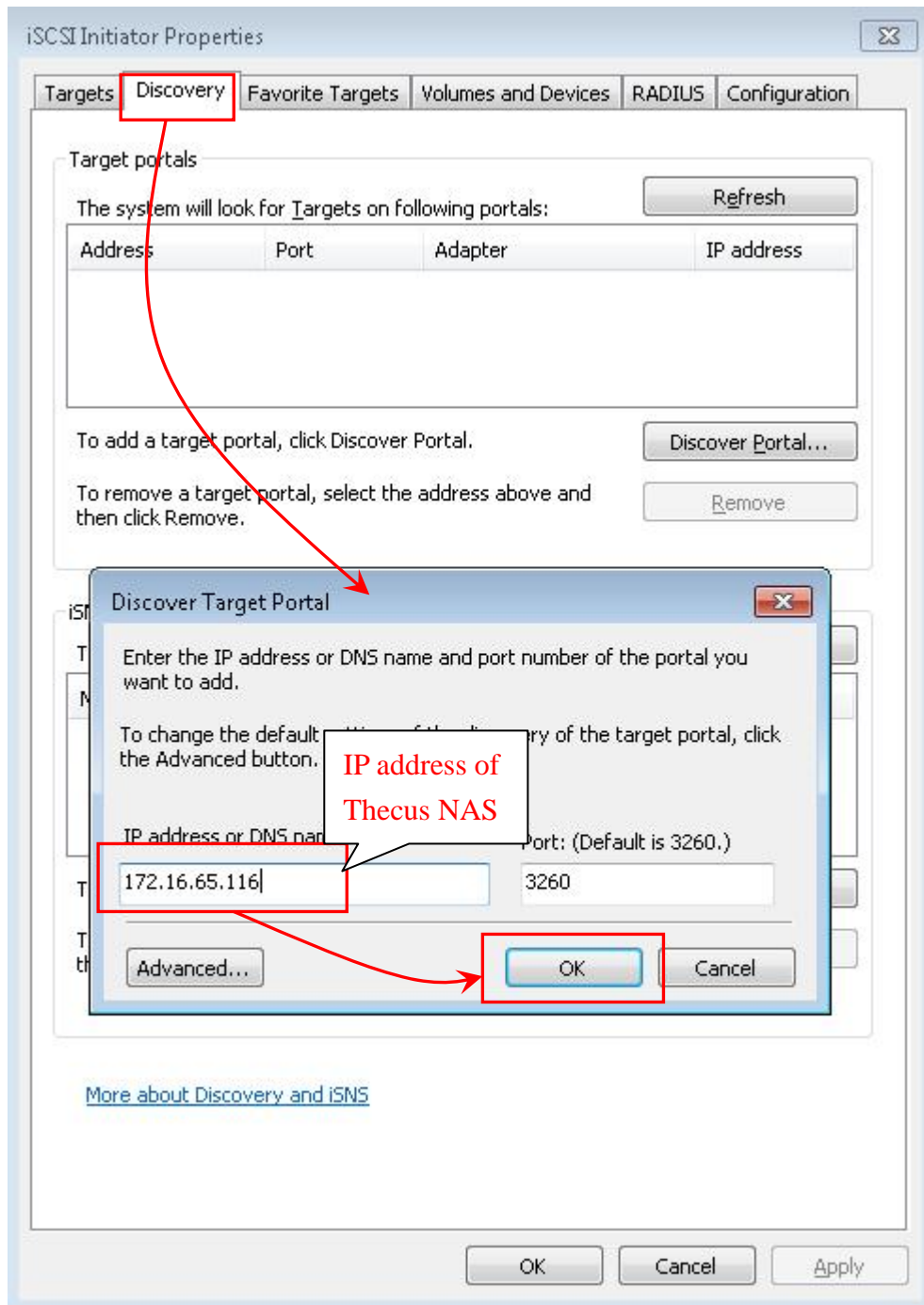
The Microsoft iSCSI Software Initiator enables the connection of a Windows host to an external iSCSI storage array using Ethernet NICs. Windows iSCSI Initiator Version 2.08 can be installed on Windows Server 2003, Windows XP, and Windows 2000. For Vista and Windows Server 2008, the iSCSI initiator is included in box.

Please visit link below for more information on Microsoft iSCSI

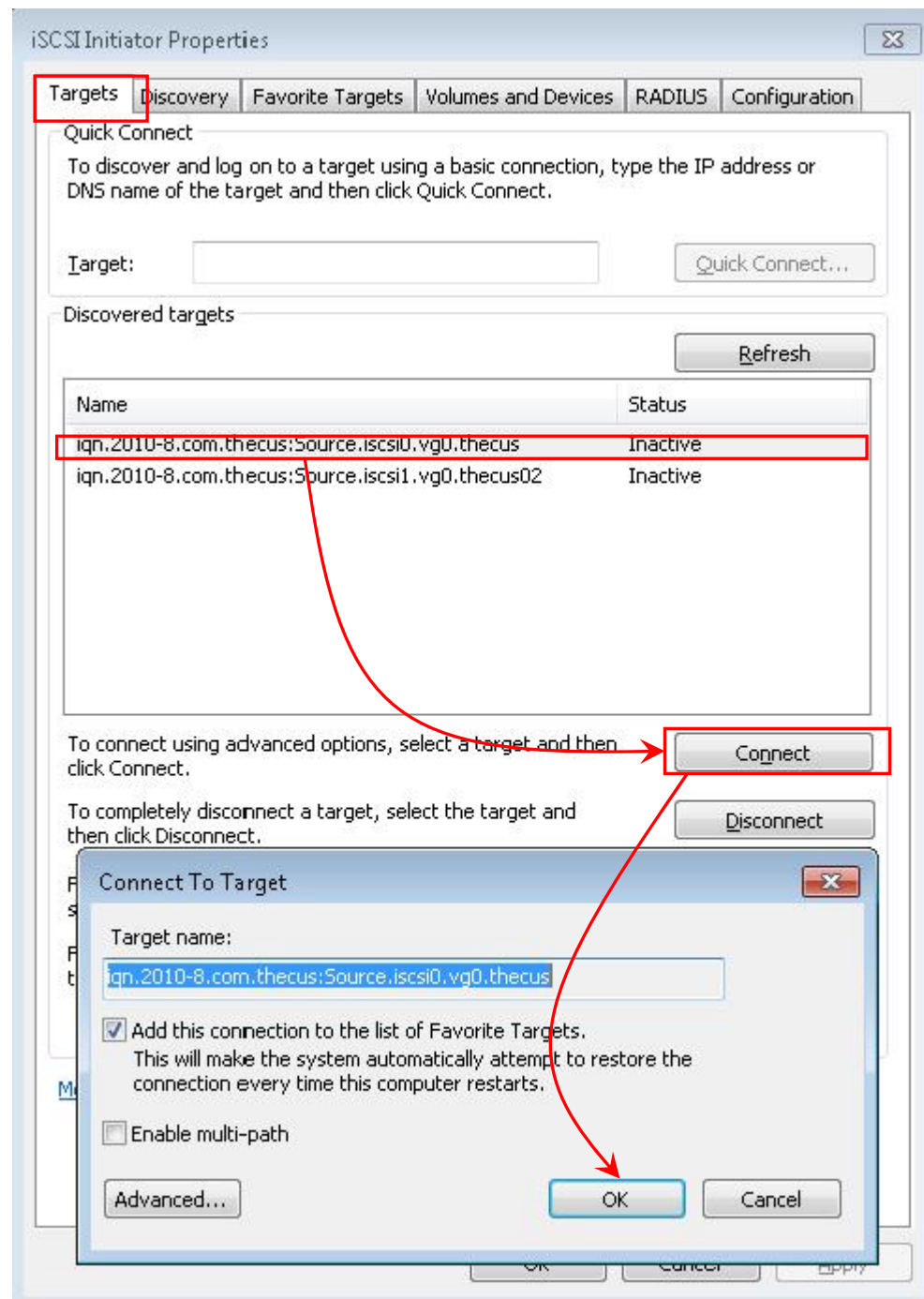
<http://www.microsoft.com/downloads/details.aspx?familyid=12cb3c1a-15d6-4585-b385-befd1319f825&displaylang=en>

Part .1 Connecting iSCSI target with Windows iSCSI initiator

1. To launch the iSCSI initiator in Windows 7, please go to **Control Panel > Administrative Tools**.
2. On the **iSCSI Initiator Properties** page, click on **Discovery**, enter the **IP address of Thecus NAS** and click **OK** to proceed. Please refer to the picture below:

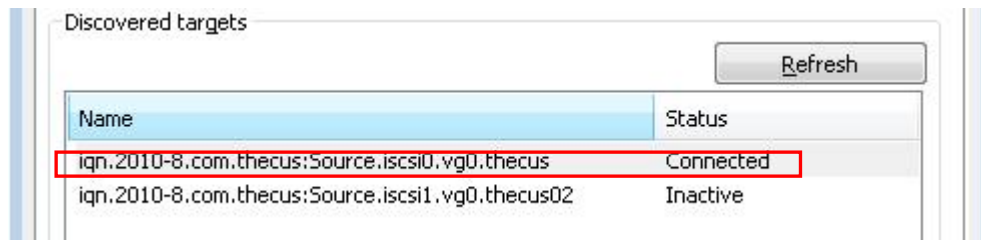


- Next, click on **Targets** to display and select the available iSCSI targets you wish to connect and click the **Connect** button to continue. A **Connect to Target** window will pop up. Click **OK** to continue.



*If you have enabled authentication on the iSCSI target, please click on the **Advanced...** button to configure **CHAP Log on Information**.

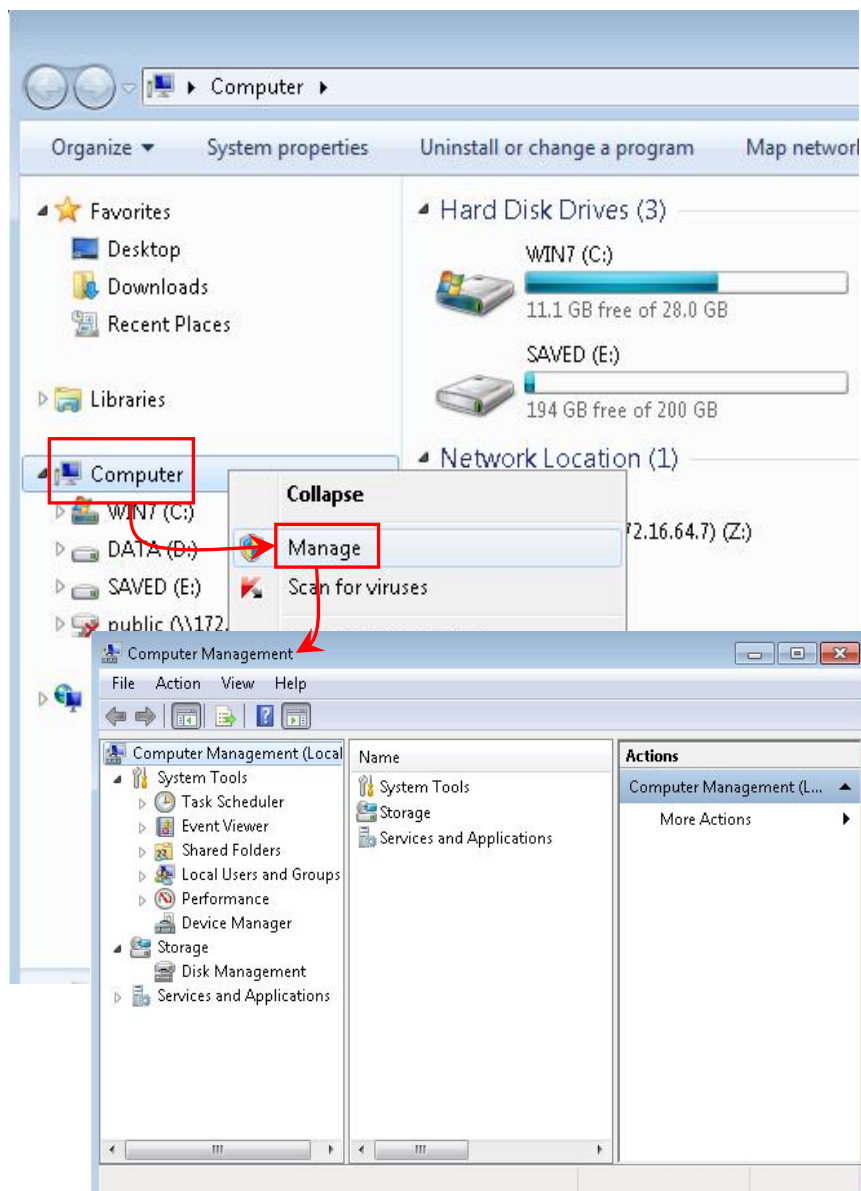
4. Upon successful connection, the status will change to **Connected** as shown in the picture below:



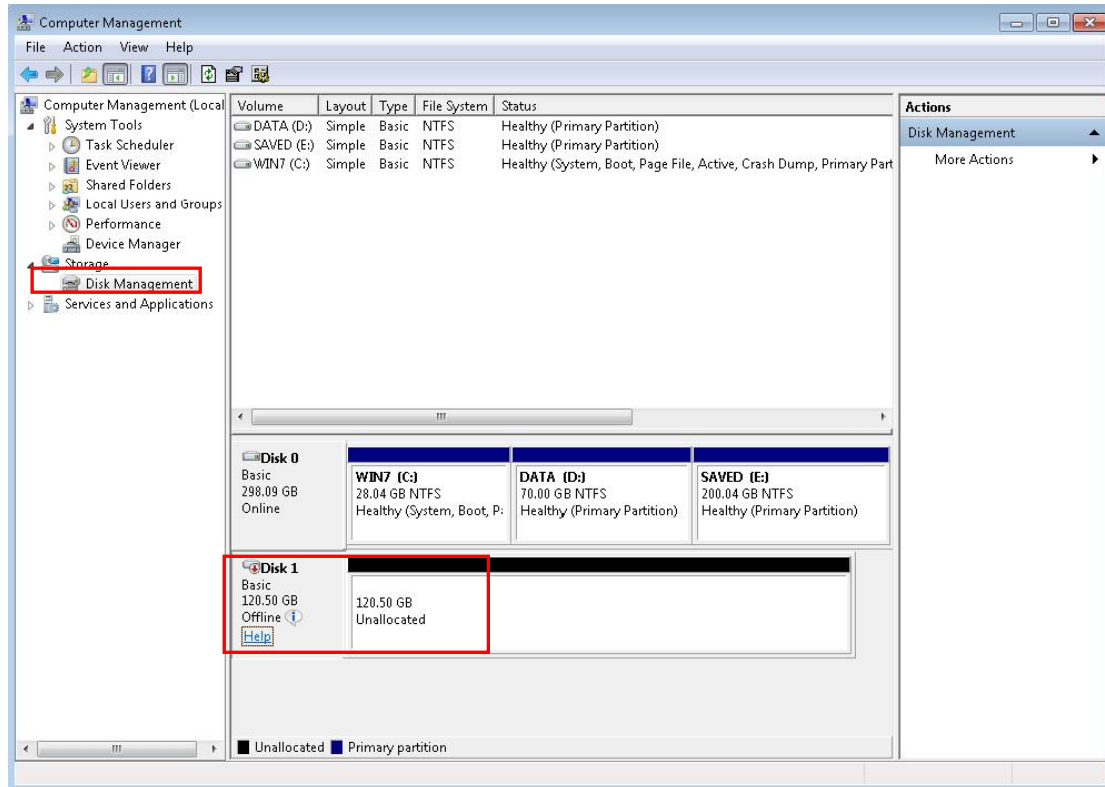
Part .2 Format iSCSI target on Windows

Now that the iSCSI target has been successfully connected, the iSCSI target will be displayed as an **Unallocated Disk** on Windows. Next, you will need to make the disk online and format it before you can start using it as a local disk to store data.

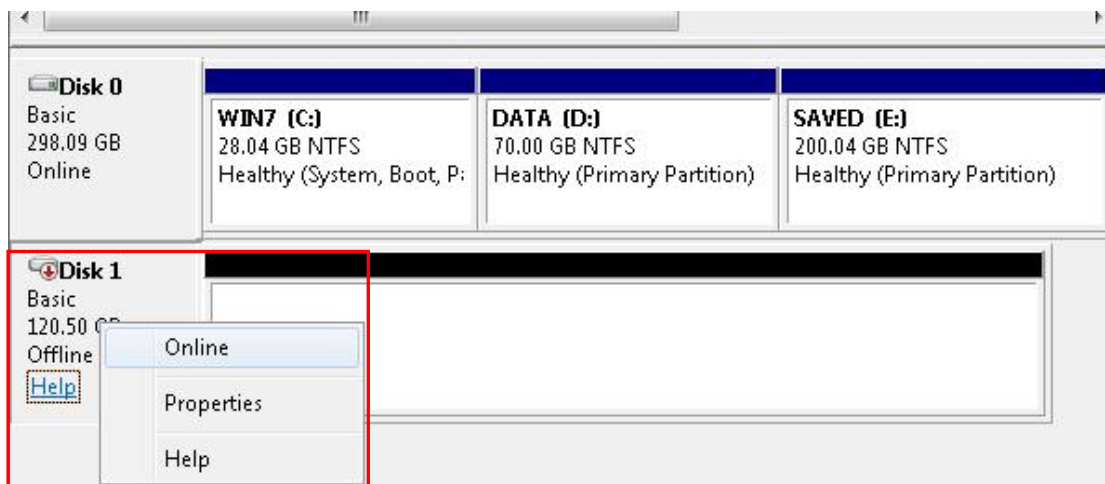
1. Right click on **Computer** and click on **Manage** to open the **Computer Management** page.



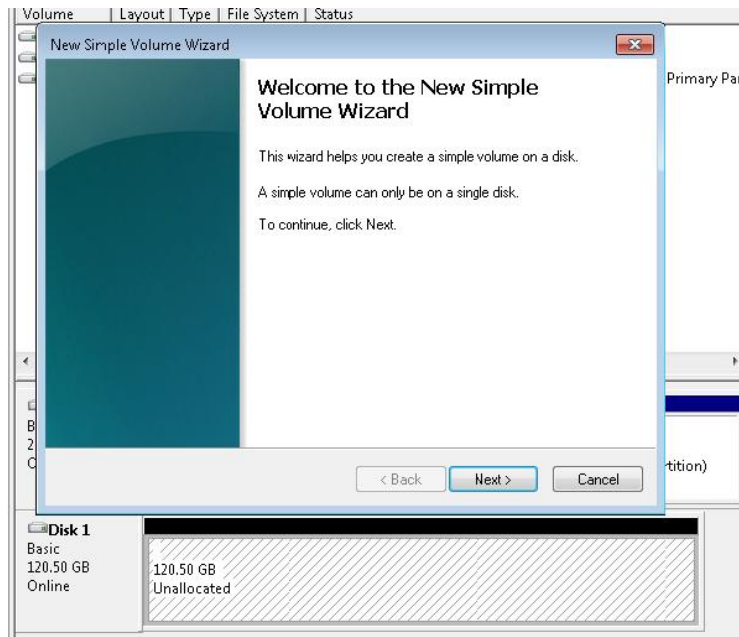
2. Click on **Disk Management** on the **Computer Management** page to display current disks information. On this page, you will see the iSCSI target now displayed as Disk 1. Please see picture below for reference:



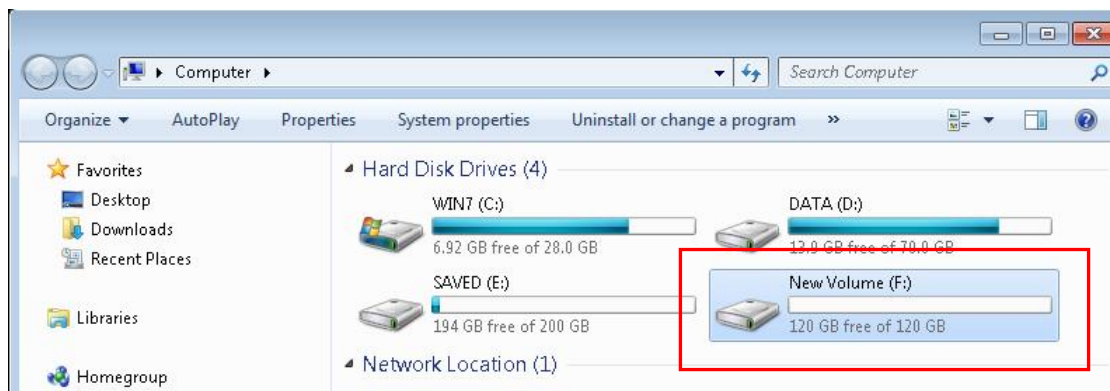
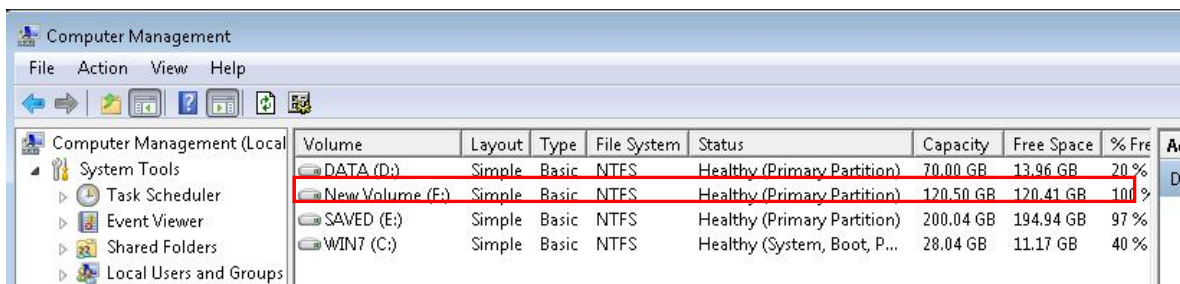
3. Right click on **Disk 1** and click **Online** to activate the disk.



4. Right click on **Disk 1** again and the **New Simple Volume Wizard** window will popup as shown below:



5. Follow the steps to complete formatting the disk. When completed, the disk will be displayed as a local hard disk drive which can then be utilized as extra storage space. Please see picture below for reference.



For more Thecus How-To Guides, please go to:

http://www.thecus.com/nas_classroom.php

For any questions regarding this How-To Guide, please email us:

webmaster@thecus.com

Copyright © 2010 Thecus Technology Corporation. All rights reserved.