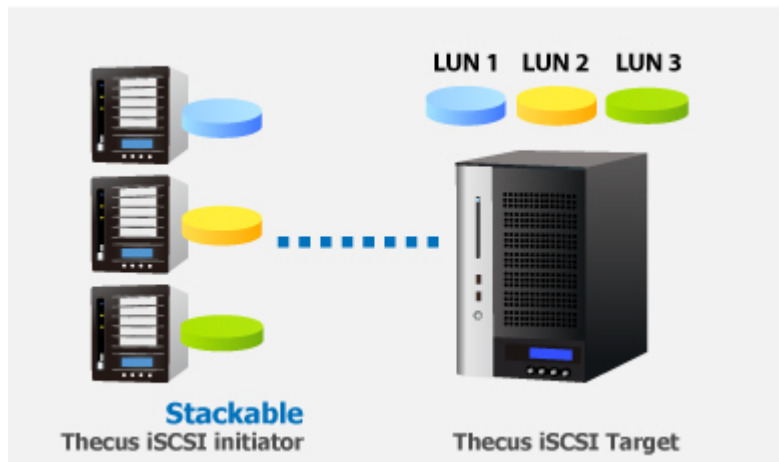


How to Stack Thecus NAS Devices

Thecus iSCSI NAS servers allow users to create iSCSI target volumes, whenever the need arises to expand storage capacity, up to 5 Thecus NAS devices can be stacked together using the built-in iSCSI initiator. Furthermore, data can be accessed via a single NAS for added convenience and flexibility.



Applicable Models: N4100PRO, N4200, N0503, N5200PRO, N5500, N7700 Series, N8800 Series, 1U4500R/1U4500S and 1U4600R/1U4600S

Please also see:

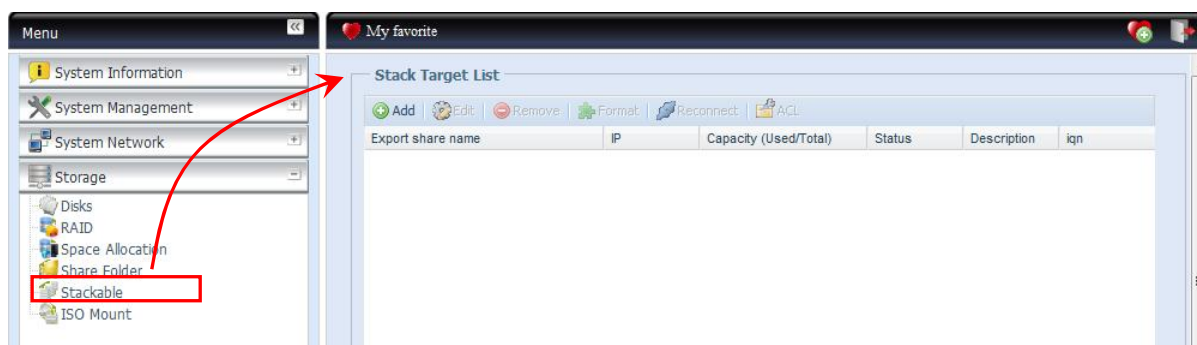
- [How to Create iSCSI Target on Thecus NAS](#)
- [How to Create iSCSI Thin-Provision Target on Thecus NAS](#)
- [How to Connect iSCSI Target on Windows](#)

Please carefully read the notes below before you begin.

Notes

1. In this HowTo Guide, we will stack a Thecus N7700 with an N7700PRO
2. Please note that if you remove your RAID volume, all data stored on the iSCSI target volume will also be lost.
3. It is strongly recommended not to connect one iSCSI target with two Thecus NAS devices to avoid data loss.

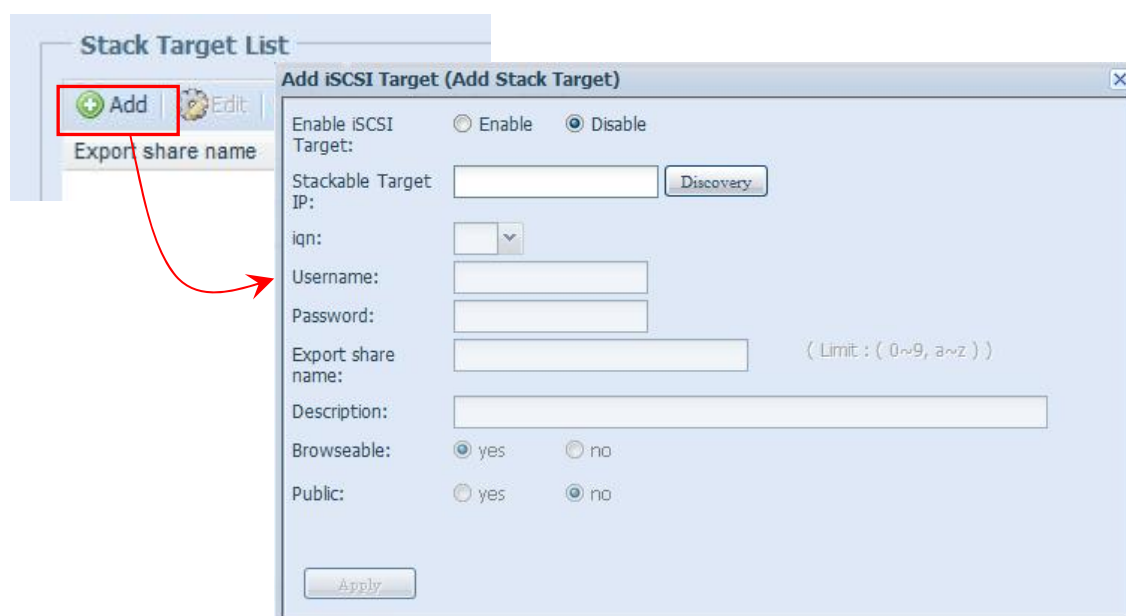
1. In the Web GUI, click **Storage >Stackable** to open the **Stack Target list** page.



Please see the following table for detailed descriptions of each option:

| Stack Target List | |
|-------------------|--|
| Item | Description |
| Add | Add new iSCSI target |
| Edit | Edit existing iSCSI target |
| Remove | Remove connected iSCSI target |
| Format | Format iSCSI target |
| Reconnect | Reconnect iSCSI target |
| ACL | The ACL option will be available when the iSCSI target is set to be Public |

2. Next, click on the **Add** button to open the **Add iSCSI Target (Add Stack Target) window** as shown below.



3. Select **Enable** to enable the iSCSI Target.

Enable iSCSI Target: Enable Disable

4. Next, input the target IP address of the stackable device (in this guide, it would be the IP address of N7700PRO) and click the **Discovery** button. The system will then search for the N7700PRO and list available iSCSI target volumes on the N7700PRO. Please refer to picture below:



Add iSCSI Target (Add Stack Target)

Enable iSCSI Target: Enable Disable

Stackable Target IP:

iqn:

5. Once the iSCSI target has been found, you may need to input a valid user name and password to validate your access rights. If the iSCSI target volume was created without authentication, then leave it blank.

Username:

Password:

6. The **Export share name** will become the network share name and displayed through network access such as SMB. Here, we will name it "**stackable**". Please note the naming limitation.

Export share name: (Limit : (0~9, a~z))

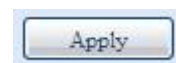
7. The **Browseable** setting designates whether or not this folder will be visible through web disk or SMB. To make the folder browseable, select Yes. Otherwise, select No.

Browseable: yes no

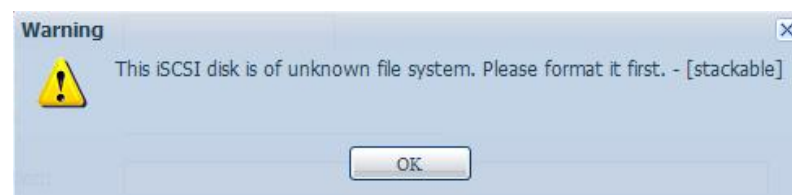
8. If Public is set to Yes, all users will be able to access it, and the ACL button will be grayed out. If Public is set to No, the ACL button will be available on the Stack Target List window.



9. When done, click on the Apply button at the bottom of the page to proceed.



10. A new window will pop up as below, click on the **OK** button to proceed.



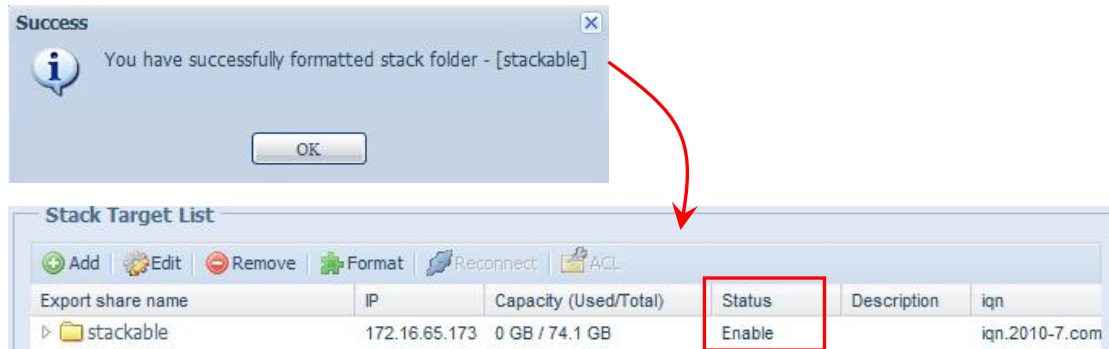
11. It will automatically return to the **Stack Target List** page, and you can see the stackable folder has been connected successfully. Next, click the **Format** button to format the volume.



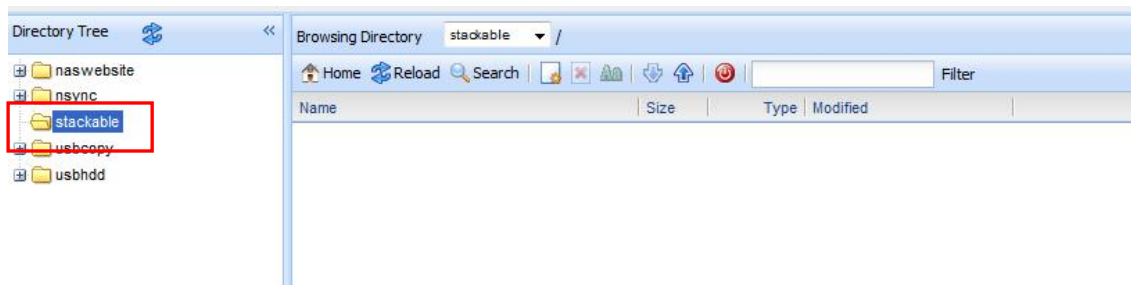
Notes

In general, if the attached stack target device has been used by another Thecus NAS as stack target volume, then the **Format** item will be displayed and system will recognize it straight away and display its capacity. Otherwise, the **Format** item will be available and the **Capacity** and **Status** items will show as "N/A" and "Unknown file system" respectively.

12. A new window will pop as below and the page will return to the Stack Target List page with status showing Enable.



The iSCSI target "Stackable" from N7700PRO has been successfully stacked with the N7700. When you login in to the N7700 Web disk, a folder named "stackable" will appear under the Directory Tree.



For more Thecus How-to guides, please go to:
http://www.thecus.com/nas_classroom.php

For any questions regarding this How-to Guide, please email us:
webmaster@thecus.com

Copyright © 2010 Thecus Technology Corporation. All rights reserved.