



N12000

The Superior Enterprise Storage Center



Intel Xeon for Blazing Speed

Harnessing the power of Intel's Xeon X3470 processor and an overwhelming 4GB of cutting-edge DDR3 RAM, the N12000 can handle anything and everything at full speed. There are no bottlenecks or speed bumps.

Enterprise Size for Enterprise Tasks

With a whopping 36 terabytes of data capacity, you'll never go wanting again. No matter whether you are providing a public server for a massive workforce or compiling a company's worth of HD video, your NAS will always be hungry for more.

SATA III and SAS 6G for Ultra-Fast Transfer Speeds

The N12000 features support for internal hard drives with SATA III and SAS 6G. This top-of-the-line connection transfers at speeds up to an amazing 6Gbit/s. It is also backwards-compatible with SATA II, so your old disks can be swapped in and out without a hitch.

High Availability (HA)

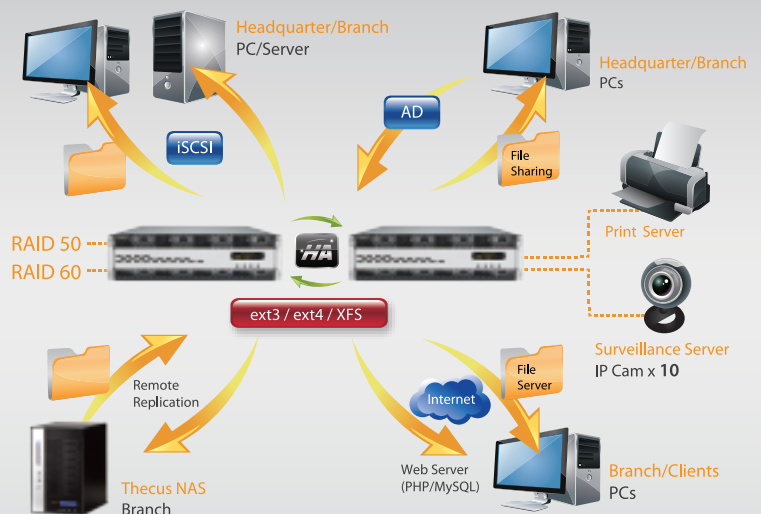
For the first time, your data is completely free of delays in access. Regardless of the situation, HA actively keeps your data on two separate, identical NAS. If one needs maintenance, the other will dutifully rise to the occasion without as much as a blip in service. Whether rain, shine, or Armageddon, your data will always be there.

Rock-Solid Security

The N12000 safeguards your data with all the RAID modes you could possibly need for an Enterprise server, including RAID 0, 1, 5, 6, 10, 50, 60, and JBOD. Changing damaged hard disks is also a breeze with its built-in hot-swap, hot-spare, online RAID migration and expansion, as well as auto-rebuild capabilities. And if you need even more protection, there is also AES 256bit RAID volume encryption available.

Block Level Accessibility via iSCSI

Take the speed of iSCSI up a notch with block level access transfers. While most transfer protocols send huge files all in one piece, this function breaks down files in smaller chunks, increasing transfer speeds immensely.



N12000

Specifications

Hardware Platform

Processor

- Intel® Xeon® Processor X3470 Processor + Intel 3450 chipset

SAS/SATA controller (HBA), PCI-e (8-lane)

- LSI 2008 HBA card supports 6G SAS/SATA(x8)

System memory

- 4GB DDR3 SDRAM

LAN interface (PCI-e)

- RJ-45x3: Intel 82574L 10/100/1000 BASE-TX Auto MDI/MDI-X
- WOL supported

USB interface

- USB 2.0 host port x6 (front x2, back x4) (Type A)
- USB 3.0 host port x2 (back x2)

eSATA

- External (back x1)

OLED

- Displays system status and information (Multilingual)

LED indicator

- Power: (Blue)
- System busy: (Yellow)
- System alert: Redundant power or system fan failure (Red)
- HDD 1-12 Activity/Fail (Green/Red)

PCI-e slots

- 8-lane (x3), One is used by SAS HBA
- 4-lane (x1)
- 1-lane (x1) used by CU30N (USB 3.0)

Power supply

- Redundant power supply least 700W or more (80plus)

Disk interface

- SATA/SAS (x12) via backplane

Thermal/Fan control

- Thermal sensor on processor temperature
- CPU Fan control
- System Fan control

System fan

- Hot Swappable (x4)

Buttons

- Power button(Front, power down controlled by S/W)
- LCM button (ENT, ESC, UP, DOWN)
- System reset button
- Locator button

RS232

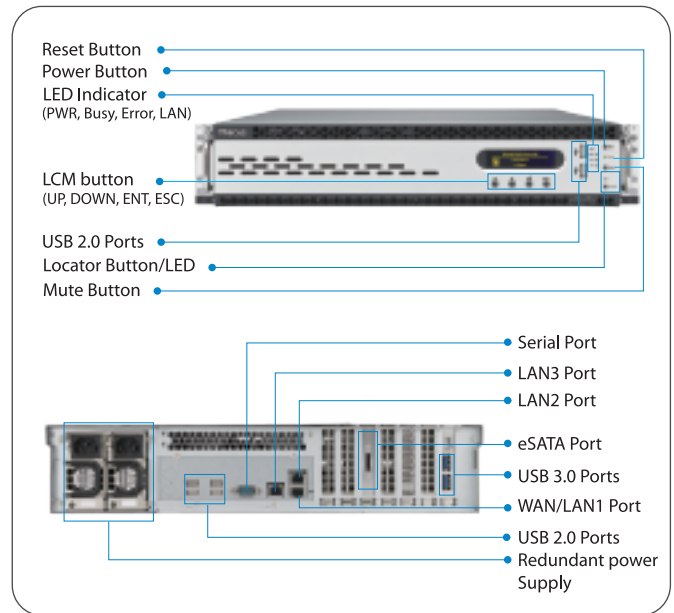
- 1 (For UPS)

Environment

- Temperature: 5°C to 40°C
- Humidity: 0 ~ 80 % R.H. (Non-condensing)

Dimension

- 2U Rack Mount



Software Functions

RAID

- RAID modes: RAID 0, 1, 5, 6, 10, 50, 60 and JBOD
- Auto-rebuild: Supported
- Hot-swap: Supported
- Dedicated hot spare: Supported
- Global hot spare: Supported
- SMART info: Supported
- SMART test: Supported
- Online RAID migration: Supported
- Online RAID expansion: Supported
- RAID volume encryption: AES256bit

Disk

- Power management: Available spin-down while idle setting
- Bad block scanning: Supported
- On-line disk roaming: Supports roaming to other N12000 in volume based

Network

- Configuration: Fixed IP Address, Dynamic IP Address
- IP sharing mode: Can be enable/disable
- Transport protocols: TCP/IP/AppleTalk
- File protocols: SMB/CFDS, HTTP/HTTPS, FTP, NFS v3, AFP
- Link aggregation: 6 modes supported
- 10GbE NIC: Supported

Data Access

- Client OS support:
 - Windows 2000/XP/2003/Vista/7
 - UNIX/Linux
 - Mac OS 9/X
- Web disk: Web-based file access
- FTP: Build-in FTP Server with bandwidth control
- Secure FTP: Build-in secure FTP Server with bandwidth control
- Download manager (module): HTTP/FTP/BitTorrent/eMule
- Printer server (IPP):
 - Supports USB printers
 - Supports IPP various printers
 - Client can manage print tasks (list/delete) via web user interface

Data Backup

- Client schedule incremental data backup:
 - Acronis True image(OEM version)
- Client system disaster recovery:
 - Acronis True image(OEM version)
- NAS remote replication:
 - Dual mode in volume based
 - Incremental
 - Synchronized
- USB device copy to N12000: Controlled through LCM
- Bi-directional USB copy (module): Supported

Block Level Access

- iSCSI target: Supports Microsoft/Mac/Linux initiator
- iSCSI initiator: For stacking with N5200/1U4500/1U4600S and R/N5500/N7700/N8800SAS and PRO/N12000/N16000
- iSCSI thin provisioning: Configurable to virtual size 16TB
- MPIO: Supported
- MCS: Supported
- Clustering: Supported
- SCSI3 persistent group reservation: Supported

Power management

- Scheduled power on/off: Supported

Volume management

- Multiple RAID: Supported
- Multiple file system selectable: EXT3/EXT4/XFS

Multimedia Support

- iTunes Server: Supports AAC, MP3 w/ID3 tag and WAV
- Photo Web Server:
 - Supports GIF, JPG (JPEG), BMP and PNG
 - Supports EXIF display
 - Supports slide shows

User Authentication

- Local user: Supports built-in user accounts
- Local group: Supports built-in user groups
- Windows ADS: Supported

File System

- Type: Journaling File System
- Capacity: 36TB (XFS)/16TB (EXT4)/8TB (EXT3) per volume
- Language support: Unicode Support

- Authorization (ACL): Read, Write, or Deny options on individual users or groups for sharing, sub-folders, and files
- User quota: Supported

Administration

- Multi-lingual web-based administration:
 - Web-based server management interface supports English, Traditional Chinese, Simplified Chinese, Japanese, Korean, French, German, Italian, Spanish, Russian, Polish and Portuguese
- Utility program:
 - MS Windows Setup Wizard, Supports Windows 2000/XP/2003/Vista/7
 - Mac OS X setup Wizard
- Email notification: Sends system messages via e-mail to system administrator
- SNMP trap: System information trap out

Others

- Dual DOM: Supported
- Web disk: Supported
- Recycling bin: Supported
- Web server (module): Supported
- ISO mount: Supported
- User module: Supported
- IP cam surveillance (module): Supports up to 10 IP cams
- HA (High Availability): Supported



D33B79 N11360

*Design and specifications are subject to change without prior notice.

 **Thecus®. Creator in Storage**
www.thecus.com

Thecus® HQ

15F., No.79, Sec. 1, Sintai 5th Rd., Sijhih Dist, New Taipei City 221, Taiwan (R.O.C.)
Email : sales@thecus.com

Thecus® U.S.A., Inc.

487 Montague Expressway, Milpitas , CA 95035
Email: support@us.thecus.com

Tech support: http://ussupport.thecus.com/esupport

Thecus® China

13th Floor Room G, Investment Building, Zhongshan South Road No. 414, Qinhuai District, Nanjing City, China
Email : support@thecus.com.cn

Thecus® NL B.V.

Marinus Dammeweg 7, 5928 PW Venlo, the Netherlands
Email: thecus_nl@thecus.com

Tech support: http://esupport.thecus-eu.com.

Support Email : support_nl@thecus.com

Thecus® Austria

Viktor-Kaplan-Strasse 9B A-2201 Gerasdorf/Wien, Austria
Email : office@thecus.at

Thecus® Australia & NZ

Unit R, 10-16 South Street, Rydalmere Business Park, Rydalmere NSW 2116, Australia
AU : sales@altech.com.au NZ : sales@altechcomputers.co.nz

Thecus® Japan

Asami Building 11F 2-4-7 Minami-Shinagawa, Shinagawa-Ku, Tokyo, 140-0004 JAPAN
Email : Salesa@uac.co.jp